

## Exome-derived adiponectin-associated variants implicate obesity and lipid biology

Cassandra N. Spracklen<sup>1,93</sup>, Tugce Karaderi<sup>2,3,4,5,93</sup>, Hanieh Yaghootkar<sup>6,7</sup>, Claudia Schurmann<sup>8</sup>, Rebecca S. Fine<sup>9,10,11</sup>, Zoltan Kutalik<sup>6,12,13</sup>, Michael H. Preuss<sup>8</sup>, Yingchang Lu<sup>8,14,15</sup>, Laura B.L. Wittemans<sup>2,16</sup>, Linda S. Adair<sup>17</sup>, Matthew Allison<sup>18</sup>, Najaf Amin<sup>19</sup>, Paul L. Auer<sup>20</sup>, Traci M. Bartz<sup>21,22</sup>, Matthias Blüher<sup>23</sup>, Michael Boehnke<sup>24</sup>, Judith B. Borja<sup>25,26</sup>, Jette Bork-Jensen<sup>27</sup>, Linda Broer<sup>28</sup>, Daniel I. Chasman<sup>29,30</sup>, Yii-Der Ida Chen<sup>31</sup>, Paraskevi Chirstofidou<sup>32</sup>, Ayse Demirkan<sup>19</sup>, Cornelia M. van Duijn<sup>19</sup>, Mary F. Feitosa<sup>33</sup>, Melissa E. Garcia<sup>34</sup>, Mariaelisa Graff<sup>35,36</sup>, Harald Grallert<sup>37,38</sup>, Niels Grarup<sup>27</sup>, Xiuqing Guo<sup>31</sup>, Jeffrey Haessler<sup>39</sup>, Torben Hansen<sup>27</sup>, Tamara B. Harris<sup>40</sup>, Heather M. Highland<sup>35</sup>, Jaeyoung Hong<sup>41</sup>, M. Arfan Ikram<sup>28,42</sup>, Erik Ingelsson<sup>43,44,45,46</sup>, Rebecca Jackson<sup>47</sup>, Pekka Jousilahti<sup>48</sup>, Mika Kähönen<sup>49,50</sup>, Jorge R. Kizer<sup>51,52</sup>, Peter Kovacs<sup>23</sup>, Jennifer Kriebel<sup>37,38</sup>, Markku Laakso<sup>53</sup>, Leslie A. Lange<sup>54</sup>, Terho Lehtimäki<sup>55,56</sup>, Jin Li<sup>57</sup>, Ruifang Li-Gao<sup>58</sup>, Lars Lind<sup>59</sup>, Jian'an Luan<sup>16</sup>, Leo-Pekka Lyytikäinen<sup>60,61</sup>, Stuart MacGregor<sup>62</sup>, David A Mackey<sup>63,64</sup>, Anubha Mahajan<sup>2,65</sup>, Massimo Mangino<sup>32,66</sup>, Satu Männistö<sup>48</sup>, Mark McCarthy<sup>2,65,67</sup>, Barbara McKnight<sup>22</sup>, Carolina Medina-Gomez<sup>28,42</sup>, James B. Meigs<sup>68,69,70</sup>, Sophie Molnos<sup>37,38</sup>, Dennis Mook-Kanamori<sup>58,71</sup>, Andrew P. Morris<sup>2,72</sup>, Renee de Mutsert<sup>58</sup>, Mike A. Nalls<sup>73,74</sup>, Ivana Nedeljkovic<sup>19</sup>, Kari E. North<sup>35</sup>, Craig E. Pennell<sup>75</sup>, Aruna D. Pradhan<sup>29,30</sup>, Michael A. Province<sup>33</sup>, Olli T. Raitakari<sup>76,77,78</sup>, Chelsea K. Raulerson<sup>1</sup>, Alex P. Reiner<sup>39</sup>, Paul M. Ridker<sup>29,30</sup>, Samuli Ripatti<sup>79,80,81</sup>, Neil Roberston<sup>2,65</sup>, Jerome I. Rotter<sup>31</sup>, Veikko Salomaa<sup>48</sup>, America A. Sandoval-Zarate<sup>80</sup>, Colleen M. Sitlani<sup>21</sup>, Tim D. Spector<sup>32</sup>, Konstantin Strauch<sup>82,83</sup>, Michael Stumvoll<sup>23</sup>, Kent D. Taylor<sup>31</sup>, Betina Thuesen<sup>84</sup>, Anke Tönjes<sup>23</sup>, Andre G. Uitterlinden<sup>28,42</sup>, Cristina Venturini<sup>32</sup>, Mark Walker<sup>85</sup>, Carol A. Wang<sup>75</sup>, Shuai Wang<sup>41</sup>, Nicholas J. Wareham<sup>16</sup>, Sara M. Willems<sup>16</sup>, Ko Willems van Dijk<sup>86,87,88</sup>, James G. Wilson<sup>89</sup>, Ying Wu<sup>1</sup>, Jie Yao<sup>31</sup>, Kristin L. Young<sup>35</sup>, Claudia Langenberg<sup>16</sup>, Timothy M. Frayling<sup>6</sup>, Tuomas O. Kilpeläinen<sup>27,90</sup>, Cecilia M. Lindgren<sup>2,11,91,94</sup>, Ruth J.F. Loos<sup>8,92,94</sup>, Karen L. Mohlke<sup>1,94</sup>

<sup>93</sup> denotes shared first authorship

<sup>94</sup> denotes shared last authorship

<sup>1</sup>Department of Genetics, University of North Carolina at Chapel Hill, Chapel Hill, NC, 27599, USA, <sup>2</sup>The Wellcome Trust Centre for Human Genetics, University of Oxford, Oxford, OX3 7FZ, UK, <sup>3</sup>Department of Biological Sciences, Faculty of Arts and Sciences, Eastern Mediterranean University, Famagusta, Cyprus, <sup>4</sup>Novo Nordisk Foundation Center for Protein Research, Faculty of Health and Medical Sciences, University of Copenhagen, Copenhagen, 2200, Denmark, <sup>5</sup>DTU Health Technology, Technical University of Denmark, Lyngby, 2800, Denmark, <sup>6</sup>Genetics of Complex Traits, University of Exeter Medical School, Royal Devon & Exeter Hospital, Exeter, EX2 5DW, UK, <sup>7</sup>Research Centre for Optimal Health, School of Life Sciences, University of Westminster, London, UK, <sup>8</sup>The Charles Bronfman Institute for Personalized Medicine, Icahn School of Medicine at Mount Sinai, New York, NY, 10029, USA, <sup>9</sup>Department of Genetics, Harvard Medical School, Boston, MA, 2115, USA, <sup>10</sup>Division of Endocrinology and Center for Basic and Translational Obesity Research, Boston Children's Hospital, Boston, MA, 2116, USA, <sup>11</sup>Broad Institute of MIT and Harvard, Cambridge, MA, 2142, USA, <sup>12</sup>University Center for Primary Care and Public Health, University of Lausanne, Lausanne, 1010, Switzerland, <sup>13</sup>Swiss Institute of Bioinformatics, Lausanne, 1015, Switzerland, <sup>14</sup>Division of Epidemiology, Department of Medicine, Vanderbilt-Ingram Cancer Center, Vanderbilt Epidemiology Center, Vanderbilt University School of Medicine, Nashville, TN, 37203-1738, USA, <sup>15</sup>Genetics of Obesity and Related Metabolic Traits Program, Icahn School of Medicine at Mount Sinai, New York, NY, 10029, USA, <sup>16</sup>MRC Epidemiology Unit, University of Cambridge, Cambridge, CB2 0QQ, UK, <sup>17</sup>Carolina Population Center, University of North Carolina at Chapel Hill, Chapel Hill, NC, 27599, USA, <sup>18</sup>Department of Family Medicine and Public Health, University of California,

San Diego, CA, 92093, USA, <sup>19</sup>Department of Epidemiology, Erasmus University Medical Center, Rotterdam, 3015CN, The Netherlands, <sup>20</sup>Joseph J. Zilber School of Public Health, University of Wisconsin-Milwaukee, Milwaukee, WI, 53201, USA, <sup>21</sup>Cardiovascular Health Research Unit, Department of Medicine, University of Washington, Seattle, WA, 98101, USA, <sup>22</sup>Department of Biostatistics, University of Washington, Seattle, WA, 98101, USA, <sup>23</sup>Medical Department III – Endocrinology, Nephrology, Rheumatology, University of Leipzig, Leipzig, 4103, Germany, <sup>24</sup>Department of Biostatistics and Center for Statistical Genetics, University of Michigan, Ann Arbor, MI, 48109, USA, <sup>25</sup>Office of Population Studies Foundation, Inc, Cebu City, Philippines, <sup>26</sup>Department of Nutrition and Dietetics, University of San Carlos, Cebu City, Philippines, <sup>27</sup>Novo Nordisk Foundation Center for Basic Metabolic Research, Faculty of Health and Medical Sciences, University of Copenhagen, Copenhagen, DK-2200, Denmark, <sup>28</sup>Department of Internal Medicine, Erasmus MC University Medical Center Rotterdam, Rotterdam, 3000 CA, The Netherlands, <sup>29</sup>Division of Preventive Medicine, Brigham and Women’s Hospital, Boston, MA, 2215, USA, <sup>30</sup>Harvard Medical School, Boston, MA, 2115, USA, <sup>31</sup>The Institute for Translational Genomics and Population Sciences, Department of Pediatrics, LABioMed at Harbor-UCLA Medical Center, Torrance, CA, 90502, USA, <sup>32</sup>Department of Twin Research and Genetic Epidemiology, Kings College London, London, SE1 7EH, UK, <sup>33</sup>Division of Statistical Genomics, Department of Genetics, Washington University School of Medicine, St. Louis, MO, 63110, USA, <sup>34</sup>National Heart, Lung, and Blood Institute, Bethesda, MD, 20892, USA, <sup>35</sup>Department of Epidemiology, Gillings School of Global Public Health, University of North Carolina at Chapel Hill, Chapel Hill, NC, 27599, USA, <sup>36</sup>Carolina Center for Genome Sciences, Chapel Hill, NC, 27599, USA, <sup>37</sup>Research Unit of Molecular Epidemiology, Institute of Epidemiology, Helmholtz Zentrum München Research Center for Environmental Health, München-Neuherberg, 85764, Germany, <sup>38</sup>German Center for Diabetes Research, München-Neuherberg, 85765, Germany, <sup>39</sup>Public Health Sciences Division, Fred Hutchinson Cancer Research Center, Seattle, WA, 98109, USA, <sup>40</sup>Laboratory of Epidemiology and Population Sciences, National Institute on Aging, NIH, Bethesda, MD, 20892, USA, <sup>41</sup>Department of Biostatistics, Boston University School of Public Health, Boston, MA, 2118, USA, <sup>42</sup>Department of Epidemiology, Erasmus MC University Medical Center Rotterdam, Rotterdam, 3000 CA, The Netherlands, <sup>43</sup>Department of Medicine, Division of Cardiovascular Medicine, Stanford University, Palo Alto, CA, 94304, USA, <sup>44</sup>Stanford Cardiovascular Institute, Stanford University of Medicine, Palo Alto, CA, 94304, USA, <sup>45</sup>Department of Medical Sciences, Molecular Epidemiology and Science for Life Laboratory, Uppsala University, Uppsala, 75185, Sweden, <sup>46</sup>Stanford Diabetes Research Center, Stanford University, Stanford, CA, 94305, US, <sup>47</sup>Division of Endocrinology, Diabetes, and Metabolism, Ohio State University, Columbus, OH, 43210, USA, <sup>48</sup>Department of Public Health Solutions, National Institute for Health and Welfare, Helsinki, FI-00271, Finland, <sup>49</sup>Department of Clinical Physiology, Tampere University Hospital, Tampere, 33522, Finland, <sup>50</sup>Department of Clinical Physiology, Finnish Cardiovascular Research Center - Tampere, Faculty of Medicine and Health Technology, Tampere University,, <sup>51</sup>Department of Medicine, Albert Einstein College of Medicine, Bronx, NY, 10461, USA, <sup>52</sup>Department of Epidemiology and Population Health, Albert Einstein College of Medicine, Bronx, NY, 10461, USA, <sup>53</sup>Institute of Clinical Medicine, Internal Medicine, University of Eastern Finland and Kuopio University of Hospital, Kuopio, FI-70029 KYS, Finland, <sup>54</sup>Division of Biomedical Informatics and Personalized Medicine, Department of Medicine, University of Colorado-Denver, Denver, CO, 80045, USA, <sup>55</sup>Department of Clinical Chemistry, Fimlab Laboratories, Tampere, 33520, Finland, <sup>56</sup>Department of Clinical Chemistry, Finnish Cardiovascular Research Center - Tampere, Faculty of Medicine and Health Technology, Tampere University, Tampere, 33522, Finland, <sup>57</sup>Department of Medicine, Division of Cardiovascular Medicine, Stanford University, Palo Alto, CA, 94304, US, <sup>58</sup>Department of Clinical Epidemiology, Leiden University Medical Center, Leiden, 2333 ZA, Netherlands, <sup>59</sup>Department of Medical Sciences, Uppsala University, Uppsala, 75185, Sweden, <sup>60</sup>Department of Clinical Chemistry, Fimlab Laboratories, Tampere, 33522, Finland, <sup>61</sup>Department of Clinical Chemistry, Finnish Cardiovascular Research Center - Tampere, Faculty of Medicine and Health Technology, Tampere University, Tampere, 33521, Finland, <sup>62</sup>QIMR Berghofer

Medical Research Institute, Brisbane, Queensland, 4006, Australia, <sup>63</sup>Faculty of Health and Medical Sciences, The University of Western Australia, Perth, West Australia, 6009, Australia, <sup>64</sup>Centre for Ophthalmology and Visual Science, Lions Eye Institute, The University of Western Australia, Perth, West Australia, 6009, Australia, <sup>65</sup>Oxford Centre for Diabetes, Endocrinology and Metabolism, Radcliffe Department of Medicine, University of Oxford, Oxford, OX3 7FZ, UK, <sup>66</sup>NIHR Biomedical Research Centre, Guy's and St Thomas' Foundation Trust, London, SE1 9RT, UK, <sup>67</sup>Oxford NIHR Biomedical Research Centre, Oxford University Hospitals Trust, Oxford, OX3 7FZ, UK, <sup>68</sup>Division of General Internal Medicine, Massachusetts General Hospital, Boston, MA, 2114, USA, <sup>69</sup>Department of Medicine, Harvard Medical School, Boston, MA, 2115, USA, <sup>70</sup>Program in Population and Medical Genetics, Broad Institute, Cambridge, MA, 2114, USA, <sup>71</sup>Department of Public Health and Primary Care, Leiden University Medical Center, Leiden, 2334 ZA, Netherlands, <sup>72</sup>Department of Biostatistics, University of Liverpool, Liverpool, L69 3GL, UK, <sup>73</sup>Laboratory of Neurogenetics, National Institute on Aging, NIH, Bethesda, MD, 20892, USA, <sup>74</sup>Data Tecnica International, Glen Echo, MD, 20812, USA, <sup>75</sup>School of Medicine and Public Health, Faculty of Medicine and Health, The University of Newcastle, Newcastle, New South Wales, 2305, Australia, <sup>76</sup>Centre for Population Health Research, University of Turku and Turku University Hospital, Turku, Finland, <sup>77</sup>Research Centre of Applied and Preventive Cardiovascular Medicine, University of Turku, Turku, Finland, <sup>78</sup>Department of Clinical Physiology and Nuclear Medicine, Turku University Hospital, Turku, Finland, <sup>79</sup>Public Health, University of Helsinki, Helsinki, FI-00014, Finland, <sup>80</sup>Institute for Molecular Medicine Finland, Helsinki, FI-00014, Finland, <sup>81</sup>Broad Institute, Cambridge, MA, 2114, USA, <sup>82</sup>Institute of Genetic Epidemiology, Helmholtz Zentrum München - German Research Center for Environmental Health, Neuherberg, 85764, Germany, <sup>83</sup>Chair of Genetic Epidemiology, Institute of Medical Informatics, Biometry and Epidemiology, Ludwig-Maximilians-Universität, Munich, 81377, Germany, <sup>84</sup>Center for Clinical Research and Disease Prevention, Bispebjerg and Frederiksberg Hospital, The Capital Region, Copenhagen, 2400, Denmark, <sup>85</sup>Institute of Cellular Medicine, The Medical School, Newcastle University, Newcastle, UK, <sup>86</sup>Department of Internal Medicine, Division of Endocrinology, Leiden University Medical Center, Leiden, 2333 ZA, Netherlands, <sup>87</sup>Eindhoven Laboratory for Experimental Vascular Medicine, Leiden, 2333 ZA, Netherlands, <sup>88</sup>Department of Human Genetics, Leiden University Medical Center, Leiden, 2333 ZA, Netherlands, <sup>89</sup>Department of Physiology and Biophysics, University of Mississippi Medical Center, Jackson, MS, 39216, USA, <sup>90</sup>Department of Environmental Medicine and Public Health, Icahn School of Medicine at Mount Sinai, New York, NY, 10029, USA, <sup>91</sup>Big Data Institute, Nuffield Department of Medicine, University of Oxford, Oxford, OX3 7LF, UK, <sup>92</sup>Division of Endocrinology and Center for Basic and Translational Obesity Research, Boston Children's Hospital, Boston, MA, 2115, USA

Correspondence: mohlke@med.unc.edu (K.L.M.) and ruth.loos@mssm.edu (R.J.F.L.)

## ABSTRACT

Circulating levels of adiponectin, an adipocyte-secreted protein associated with cardiovascular and metabolic risk, are highly heritable. To gain insights into the biology that regulates adiponectin levels, we performed an exome array meta-analysis of 265,780 genetic variants in 67,739 individuals of European, Hispanic, African American, and East Asian ancestry. We identified twenty loci associated with adiponectin, including 11 that had been reported previously ( $P < 2 \times 10^{-7}$ ). Comparison of exome array variants to regional linkage disequilibrium (LD) patterns and prior genome-wide association study (GWAS) results detected candidate variants ( $r^2 > .60$ ) spanning as much as 900 kb. To identify potential genes and mechanisms through which the previously unreported association signals act to affect adiponectin levels, we assessed cross-trait associations, expression quantitative trait loci in subcutaneous adipose, and biological pathways of nearby genes. Eight of the nine loci were also associated ( $P < 1 \times 10^{-4}$ ) with at least one obesity or lipid trait. Candidate genes include *PRKAR2A*, *PTH1R*, and *HDAC9*, which have been suggested to play roles in adipocyte differentiation or bone marrow adipose tissue. Taken together, these findings provide further insights into the processes that influence circulating adiponectin levels.

## INTRODUCTION

Adiponectin is an adipose tissue-derived hormone that affects energy homeostasis and may link adiposity with the risk of type 2 diabetes (T2D), hyperinsulinemia, and metabolic syndrome.<sup>1; 2</sup> Higher serum concentrations of adiponectin are associated with protection against inflammation, and lower risk for obesity, cardiovascular disease, and T2D.<sup>1; 3; 4</sup> Genetic overlap has been observed between adiponectin levels and metabolic syndrome, as well as the metabolic syndrome-related traits of high-density lipoprotein (HDL) cholesterol and plasma insulin.<sup>5; 6</sup> Mendelian randomization (MR) studies have suggested a causal role for adiponectin in metabolic syndrome and insulin sensitivity, but not coronary artery disease, insulin resistance, or T2D.<sup>7-10</sup> Experimental manipulations in mice have demonstrated that

acute depletion of adiponectin results in systemic insulin resistance and poor lipid homeostasis, leading to hyperlipidemia.<sup>11;12;13</sup> Thus, understanding the pathophysiology of adiponectin levels may lead to therapeutic targets for the prevention and treatment of cardiovascular disease.<sup>2; 14; 15</sup>

Circulating levels of adiponectin are under substantial genetic influence. Twin and family studies have estimated that 30-70% of the variability in adiponectin levels can be explained by genetic variation.<sup>16-18</sup> The largest adiponectin genome-wide association study (GWAS) meta-analysis performed to date tested associations between ~2.4 million variants, imputed to the HapMap reference panel, in up to 35,355 individuals primarily of European ancestry (83%) and identified twelve loci, including *ADIPOQ* (MIM:605441), which encodes the adiponectin protein, and *CDH13* (MIM: 601364), which encodes cadherin-13, a receptor that binds to circulating adiponectin.<sup>14</sup> A subsequent adiponectin GWAS meta-analysis in up to 18,079 East Asians, using HapMap-imputed variants, identified one additional locus near *WDR11-FGFR2* (MIM:606417, MIM:176943).<sup>19</sup> These common genetic variants accounted for only 5% of the variance in adiponectin levels.<sup>14; 19; 20</sup> Further investigation into the genetic basis for adiponectin levels and the associated loci would provide further insight into the genetic architecture and biological processes influencing adiponectin.

To discover and characterize candidate loci influencing circulating levels of adiponectin in order to further understand its role in insulin sensitivity and related traits, we combined exome array association results of up to 67,739 individuals from four ancestries (60,465 European, 3,271 African, 2,568 East Asian, and 1,435 Hispanics) to conduct the largest genetic analysis of adiponectin levels to date. Exome-based association studies, containing mostly nonsynonymous variants (N=213,082, 80.2% of all variants in the analysis), may potentially provide results with more direct biological interpretability. However, nonsynonymous variant associations do not constitute sufficient evidence to implicate the target gene(s)

underlying an association signal.<sup>21</sup> Therefore, we used extent of linkage disequilibrium (LD), gene expression-variant association data, and pathway analyses to suggest genes and mechanisms through which the previously unreported variants may act to affect adiponectin levels.

## **MATERIAL AND METHODS**

### *Study design and participants*

Our meta-analysis consisted of 25 studies (28 datasets) comprising up to 67,739 adult individuals ( $\geq 18$  years) of the following ancestries: (i) European ( $N \leq 60,465$ ), (ii) East Asian ( $N \leq 2,568$ ), (iii) African American ( $N \leq 3,271$ ), and (iv) Hispanic ( $N \leq 1,435$ ). All participating institutions and coordinating centers approved this project, and informed consent was obtained from all study participants. In our primary discovery analyses, we combined data of all ancestries for both sex-specific and sex-combined analyses (Figure S1). Study-specific design, sample quality control, and descriptive statistics are provided in Tables S1-3.

### *Genotype calling*

Each of the 25 contributing studies followed a standardized protocol and performed genotype calling of variants on the Illumina HumanExome Beadchip using the designated manufacturer's software. Study-specific quality control measures of the genotyped variants were implemented before association analyses (Table S2). We excluded variants with a call rate  $< 98\%$ , Hardy Weinberg equilibrium  $P < 1 \times 10^{-6}$ , or large allele frequency deviations from the reference populations ( $> 0.60$  for all ancestry analyses and  $> 0.30$  for ancestry-specific population analyses).

### *Statistical analyses*

We created residuals of adiponectin levels (in  $\mu\text{g/ml}$ ) after adjustment for age, body mass index (BMI), and principal components [PCs, derived from GWAS data, variants with minor allele frequency (MAF) $>1\%$  on the exome array, or ancestry-informative markers on the exome array], as well as any study-specific covariates, using a linear regression model. For studies with unrelated individuals, residuals were calculated separately by sex; for family-based studies, sex was included as a covariate in the model. Additionally, residuals for case-control studies were calculated in cases and controls separately. Finally, residuals were subjected to inverse normal transformation to obtain distributions with a mean of 0, and a standard deviation of 1, yielding approximately normally distributed trait values for downstream analyses. In additional analyses performed without adjustment for BMI and adjusted for fat percentage instead of BMI, results were similar (Figures S2-5, Table S4) with one additional locus detected in models unadjusted for BMI [rs900399 in *LEKR1* (MIM:613536)]; other signals became less significant.

Each study performed single-variant association analyses between inverse normal-transformed adiponectin levels (adjusted for age, sex, BMI, and other study-specific covariates) and exome array variants, including up to 28,868 common (MAF $\geq 5\%$ ) and 236,912 low frequency ( $1\% \leq \text{MAF} < 5\%$ ) or rare variants (MAF $< 1\%$ ), using either RAREMETALWORKER or RVTEST (Table S2).<sup>22; 23</sup> All analyses were performed in sex-combined and sex-specific groups, accounting for potential cryptic relatedness (kinship matrix), in a linear mixed model.

We applied a centralized quality control procedure to individual cohort association summary statistics using EasyQC<sup>24</sup> to: (i) assess adiponectin transformation, (ii) compare allele frequency alignment to the

1000 Genomes Project phase 1 reference panel to detect strand errors, and (iii) examine quantile-quantile plots per study to detect population stratification, cryptic relatedness, and genotype biases.

Summary statistics were meta-analyzed using fixed-effects inverse-variance analyses in an all-ancestry, sex-combined, additive model, and variant associations that reached  $P < 2 \times 10^{-7}$  were considered array-wide significant (Bonferroni corrected for multiple testing;  $0.05/265,780$  variants).<sup>21; 25; 26</sup> Meta-analyses were carried out using RAREMETAL<sup>27</sup> by two analysts at two sites in parallel. For all significant variants identified in the meta-analyses, we tested for differences between women-specific and men-specific beta estimates using EasyStrata.<sup>28</sup> Each variant that reached  $P_{\text{sexhet}} < 0.05 / (\text{number of variants tested})$  was considered significant. In secondary analyses, we also performed analyses with adiponectin levels unadjusted for BMI and with adiponectin levels adjusted for fat percentage instead of BMI, as well as analyses stratified by sex (Figures S2-8).

For gene-based analyses, we applied the sequence kernel association test (SKAT)<sup>29</sup> and variable threshold (VT)<sup>30</sup> gene-based methods in RAREMETAL using two different sets of criteria (broad and strict).<sup>31; 26</sup> These two sets of criteria were used to select variants with a MAF < 5% within each ancestry group based on coding variant annotation from five prediction algorithms (PolyPhen2, HumDiv and HumVar, LRT, MutationTaster, and SIFT). The broad gene-based tests comprised of nonsense, stop-loss, splice site, and missense variants annotated as damaging by at least one algorithm mentioned above. The strict gene-based tests included only nonsense, stop-loss, splice site, and missense variants annotated as damaging by all five algorithms. Statistical significance for gene-based tests was set at a Bonferroni-corrected threshold of  $P < 2.5 \times 10^{-6}$  based on approximately 20,000 genes.<sup>32</sup> As secondary analyses were nested and/or highly correlated with the primary analysis, we chose the same stringent Bonferroni-corrected significance threshold for all analyses.



We also used the RAREMETAL R package to identify independent association signals across all ancestries and European (sex combined and sex-specific) meta-analysis results. In 1 Mb windows centered on each lead (most significantly associated) variant, we performed sequential rounds conditioning on the lead variant to identify additional signals at  $P < 2 \times 10^{-7}$ .

### *Assessment for bias*

To address possible collider bias<sup>33;34</sup> in our significant association results, we used the summary statistics from an exome-chip study of BMI, a GWAS of body fat percentage, and our adiponectin results from models unadjusted for BMI or fat percentage.<sup>26</sup> Our principal aim was to exclude the possibility that some of the discovered adiponectin-SNP associations are entirely driven by the association of the SNPs and obesity traits correlated with adiponectin levels. To this end, BMI and fat percentage-adjusted associations were corrected for potential bias due to phenotypic correlation between adiponectin levels and each covariate as well as possible association between each variant and covariate. Strength and significance of association with adiponectin unadjusted, adjusted for BMI, or adjusted for fat percentage were compared with each other, and those of covariates and corrected statistics. Corrected effect sizes were estimated using the following equation<sup>33</sup>:

$$\beta_{\text{corrected}} = \beta_{\text{adiponectin adj. covariate}} + (\beta_{\text{covariate}} \times \rho_{\text{covariate x adiponectin}})$$

where  $\rho_{\text{BMI x adiponectin}} = -0.31$  and  $\rho_{\text{fat percent x adiponectin}} = -0.27$ .<sup>35</sup>

### *Associations with cardiometabolic traits*

We evaluated each of the nine previously unreported loci that we detect here for association in prior adiponectin GWAS meta-analyses from ADIPOGen<sup>14</sup> and AGEN<sup>19</sup> and with other cardiometabolic traits and diseases. For these traits, we examined existing genome- and exome-wide meta-analysis results from consortia including GIANT (BMI<sup>26</sup> and waist-to-hip-ratio adjusted for BMI<sup>36</sup>), GLGC (total cholesterol, HDL, LDL, and triglycerides)<sup>25</sup>, T2D<sup>21</sup>, and MAGIC (HbA1c, fasting insulin, fasting glucose, 2-hour glucose)<sup>37;38-40</sup>. We also examined the UK Biobank for associations with cardiometabolic traits and diseases. In addition, PhenoScanner was used to perform a PheWAS on all available traits, plasma proteins, and metabolites. We report proteins and metabolites when the lead exome variant and the variant most strongly associated with the protein or metabolite within 1 Mb exhibit high pairwise LD ( $r^2 > 0.80$ ). We did not identify any plasma proteins that met our criteria.

#### *Annotation and colocalization of association signals with eQTL data*

We examined whether any of the lead exome-wide associated variants were associated with expression (FDR < 1% for METSIM for rigor; FDR < 5% for GTEx as available) of nearby transcripts located within 1 Mb in subcutaneous or visceral adipose tissue (eQTLs).<sup>41; 42</sup> Briefly, gene expression was measured in subcutaneous adipose tissue in 770 Finnish male participants from the Metabolic Syndrome in Men Study (METSIM) using the Affymetrix U219 microarray. From GTEx v7, we used gene expression data from 385 subcutaneous and 315 visceral adipose samples. Variant-trait and eQTL signals may colocalize when the lead exome variant and the variant most strongly associated with the expression level of the corresponding transcript (eSNP) exhibit high pairwise LD ( $r^2 > 0.80$ ). For such signals identified in the METSIM eQTL data, we also further assessed colocalization using reciprocal conditional analyses to test the association between the lead exome variant and transcript level when the eSNP was also included in

the model, and vice versa; we reported exome-wide and eQTL signals as colocalized if the association for the eSNP was not significant ( $FDR > 1\%$ ) when conditioned on the adiponectin-associated exome variant.

### *Gene set enrichment analysis*

We performed a gene set enrichment analysis based on the European summary statistics of variants from the adiponectin adjusted for BMI association results using EC-DEPICT. EC-DEPICT, designed for use in exome array analyses,<sup>26; 43</sup> assesses enrichment for a group of 14,462 gene sets (including canonical pathways, protein-protein interaction networks, and mouse phenotypes) which have been “reconstituted” using large-scale co-expression data. Briefly, enrichment P-values were calculated using 2,000 permutations of 378,141 European samples from the UK Biobank, where only variants present on both the ExomeChip and UK Biobank arrays were included for analysis.<sup>26;44</sup> The input data included genes directly containing the most significant nonsynonymous coding variant per locus, where loci were defined as +/- 1 Mb from the index variant. We performed EC-DEPICT analyses using variants with an association of  $P < 5 \times 10^{-4}$  across (1) all variants, and (2) variants with  $MAF < 5\%$ . We considered a false discovery rate of less than 0.05 to be statistically significant.

We also performed a pathway analysis by applying PASCAL to the European exome-wide summary statistics from the adiponectin (adjusted for BMI) association results.<sup>45</sup> The method derives gene-based scores and subsequently tests for over-representation of high gene scores in pre-defined biological pathways. For the gene-based scores we performed both MAX and SUM estimations: the former being more powerful when the association is driven by a single variant in/near the focal gene, while the latter is preferred in case of allelic heterogeneity. We used both standard pathway libraries and dichotomized ( $Z\text{-score} > 3$ ) reconstituted gene sets from DEPICT. A reference dataset from UK10K (TwinsUK<sup>46</sup> and

ALSPAC<sup>47</sup> studies, n=3,781) was used for LD estimation. Unlike EC-DEPICT, *P*-value thresholds were not used to select input variants from the exome-wide data. Variants with MAF<1% in the reference dataset were included in the analysis. To separate the contribution of coding (nonsynonymous and synonymous) variants, we performed PASCAL analyses across (1) all variants, and (2) only coding variants.  $P < 5 \times 10^{-5}$  was considered statistically significant after Bonferroni correction for multiple testing with 1000 independent pathways.

## RESULTS

We conducted meta-analyses of single-variant association summary statistics, including data from up to 67,739 individuals from 25 studies (Tables S1-3) across four ethnic groups; 89% of individuals had European ancestry. Each study performed single-variant association analyses adiponectin adjusted for age, sex, and BMI and exome array variants, and summary statistics from each dataset were meta-analyzed using fixed-effects analyses in an all-ancestry, sex-combined, additive model.<sup>21; 25; 26</sup> In secondary analyses, we also examined adiponectin levels unadjusted for BMI, adiponectin levels adjusted for fat percentage instead of BMI, and models stratified by sex (Figures S2-8). Participants were broadly representative of adults (age 18-95 years) of both sexes (51.2% male) with a wide distribution of BMI and adiponectin levels (Table S3).

### *Association results*

The primary sex-combined analysis of adiponectin levels adjusted for BMI identified variants ( $P < 2.0 \times 10^{-7}$ ) at 11 known loci [in/near *LYPLAL1* (MIM: 616548), *IRS1* (MIM: 147545), *STAB1* (MIM: 608560), *ADIPOQ*, *ARL15* (MIM: unknown)/*FST* (MIM: 136470), *PDE3A* (MIM: 123805), *CLIP1* (MIM: 179838), *DNAH10* (MIM:

605884), *CMIP* (MIM: 610112), *CDH13*, and *PEPD* (MIM: 613230)] and eight loci [in/near *KIF9* (MIM: 607910), *DALRD3* (MIM: unknown), *FAM13A* (MIM: 613299), *SLC39A8* (MIM: 608732), *SNX13* (MIM: 606589), *GIMAP7* (MIM: 616961), *RIC8B* (MIM: 609147), and *SLC38A8* (MIM: 615585); Table 1; Table S5; Figures 1-2, S7, S9]. Lead variants at each locus were primarily common (MAF $\geq$ 5%), with the exception of one low-frequency variant at *SLC39A8* (rs13107325; MAF=4.7%) and one rare variant at *SLC38A8* (rs145119400; MAF=0.5%). An all-ancestry, women-only analysis identified an additional locus [rs1199354, *OPLAH* (MIM: 614243), MAF=10.1%] that also exhibited significant sex heterogeneity ( $P=2.5\times 10^{-5}$ ; Table 1; Figure S10). Low to moderate levels of heterogeneity were detected among the lead variants at each locus (Table S5). We further tested the association of adiponectin levels with aggregated variants within each gene by performing gene-based association tests; however, no additional loci were detected (Table S6).

To investigate the potential for collider bias in the adiponectin analysis resulting from adjusting for a correlated covariate, BMI, we investigated the behavior of variants associated with adiponectin adjusted for BMI in analyses of adiponectin without adjustment for BMI and analyses of BMI alone, estimating the effect of bias. Nearly all of the adiponectin-associated variants identified showed a genuine effect on adiponectin levels, and any bias caused by adjusting for BMI was minimal. Only one locus (*SLC39A8*; rs13107325) exhibited potential pleiotropy and/or a collider bias effect due to BMI adjustment (Table S7). It is possible that applying rank-based inverse normal transformation to the residuals as opposed to the adiponectin values could have reintroduced inflation from the covariates and identified false positive results.<sup>48</sup> However, examination of cohort-specific QQ plots, comparison of models unadjusted and adjusted for BMI, and the results from the collider bias analysis suggest any inflation is unlikely.

To identify additional association signals at the 20 significant loci, we implemented conditional analyses and identified three additional, already established loci that harbored multiple distinct variants associated with adiponectin: *ADIPOQ* (9 signals;  $r^2=0.00-0.19$ ), *DNAH10-CCDC92* (2 signals;  $r^2=0.07$ ; MIM: 614848), and *SLC38A8* (2 signals;  $r^2=0.00$ ) (Table S8; Figure S11). These results are consistent with previous reports of multiple signals at these loci for adiponectin and/or other cardiometabolic traits.<sup>49; 50</sup> While the exome array-based analysis does not fully characterize the number or identity of the signals due to the relatively low density of analyzed variants, these findings support the presence of multiple adiponectin association signals at these loci.

#### *Other trait associations*

To further characterize the lead variants, we examined their associations with a range of cardiometabolic traits, including anthropometric, blood pressure, glycemic, and lipid traits, and T2D (Tables 2, S9-10). Of the nine loci, six have previously shown a genome-wide significant association ( $P<5\times 10^{-8}$ ) with at least one additional cardiometabolic trait: WHRadjBMI (four loci), HDL cholesterol (three loci), fat free mass index (two loci), body fat percentage (two loci), hip circumference (two loci), diastolic blood pressure (two loci), systolic blood pressure (one locus), hypertension (one locus), and BMI (one locus). The adiponectin signal associated with the largest number of other traits is *SLC39A8*, which also exhibited suggestive pleiotropy in the collider bias analysis (Table S7). That lead variant (p.Ala391Thr; rs13107325) has previously been shown to associate with BMI, blood pressure traits, HDL, other obesity-related traits, as well as Crohn's disease and schizophrenia.<sup>51</sup> An additional PheWAS was performed in all available traits, plasma proteins, and metabolites (Tables S11-12). The additional trait associations may suggest pleiotropic or mediating effects at these loci.

### *Extent of LD surrounding exome array signals*

The identification of nonsynonymous variant associations has the potential to pinpoint functional genes. However, evidence of association is not sufficient to conclude that these variants or genes have causal effects on trait levels. To assess the potential role of variants at previously unreported adiponectin loci, we assessed the LD with neighboring variants using 1000 Genomes Phase 3 for the European population to estimate the extent of the locus and to identify additional candidate variants ( $r^2 > 0.80$ ) (Figures 1-2, S9; Table 2). Variants at four loci (nearest genes *KIF9*, *DALRD3*, *GIMAP7*, and *OPLAH*) are each part of wider LD blocks containing between 37 and 330 variants that span a distance of 35 to 819 kb including multiple genes; three of these loci include nonsynonymous variants in more than one gene (Figure 1-2; Table 2). For example, at the *KIF9* locus (Figure 1, Table 2), the lead variant, rs2276853, encodes *KIF9* p.Arg638Gly. However, 330 additional variants spanning nearly 600 kb are in high LD with the lead variant ( $r^2 > 0.80$ ), including nonsynonymous variants in four additional genes [*SETD2* (MIM: 612778), *SCAP* (MIM: 601510), *NBEAL2* (MIM: 614169), *PTPN23* (MIM: 606584)]. The wide LD regions motivated further investigation of possible mechanisms and gene(s) through which candidate variant(s) act to affect adiponectin levels.

Most of the nonsynonymous variants identified in the meta-analysis have low or inconsistent evidence of functional consequences in algorithms, suggesting that other variants may have functional effects (Table S13). Because the exome array captures only a limited set of variants and the extent of LD surrounding each of locus can be vast, we further interrogated each locus to determine if the lead variant is the best representative of the association signal. To do so, we examined the association results of the exome array loci within the ADIPOGen Consortium genome-wide meta-analysis of adiponectin levels (n=35,355; HapMap imputed).<sup>14</sup> At six loci (*KIF9*, *GIMAP7*, *DALRD3*, *RIC8B*, *SNX13*, and *FAM13A*), a variant other than the exome array lead variant showed a more significant association with adiponectin (Figures 1-2, Table

2). For example, at the *KIF9* locus, genome-wide association results showed variants in moderate LD ( $0.60 < r^2 < 0.80$ ) with the lead exome array variant that had stronger association with adiponectin levels.<sup>14</sup> These variants are located near *PTH1R* (MIM: 168468), and reduced *PTH1R* leads to increased adipocyte differentiation and higher adiponectin levels (Table S14)<sup>52</sup>, suggesting *PTH1R* as a strong candidate gene at this locus. A seventh locus, *SLC38A8*, could not be compared to the genome-wide association data because neither the lead variant nor either of the two variants in strong LD ( $r^2 > 0.80$ ) with it were evaluated by ADIPOGen.<sup>14</sup> These genome-wide analyses suggest that the genes harboring the lead exome array variants may not be the best candidate genes and that the association signals may act via other variants and possibly other nearby genes instead.

#### *Comparison with eQTL signals*

To aid in the identification of candidate genes at the nine previously unreported association signals, we examined whether any of the variants associated with adiponectin are colocalized (**see Methods**) with expression levels of nearby transcripts in subcutaneous or visceral adipose tissue. For this analysis, we compared the pattern of variant association with adiponectin levels to the pattern of variant association in the expression quantitative trait locus (eQTL) analysis in GTEx<sup>42</sup> and the METSIM study (Table S15).<sup>41</sup> Two loci showed evidence of colocalized associations. The adiponectin-associated variant rs13133548 is in high LD ( $r^2=0.95$ ) with rs72614904, the variant most strongly associated with expression level of *FAM13A* ( $\beta=0.190$ ,  $P=8.10 \times 10^{-9}$ ); alleles associated with lower adiponectin are associated with higher *FAM13A* expression level. Consistent with these associations, *FAM13A* has been shown to control adipocyte lipolysis (Table S14).<sup>53</sup> The next adiponectin-associated variant rs3087866 is in high LD ( $r^2=0.99$ ) with rs6446200, the variant most strongly associated with expression levels of *PRKAR2A* (MIM: 176910) ( $\beta=0.652$ ,  $P=5.79 \times 10^{-25}$ ; Figure 2), *AMT* ( $r^2=0.92$ ,  $\beta=-0.364$ ,  $P=1.14 \times 10^{-8}$ ), and *NICN1* (MIM: 611516)



( $r^2=0.90$ ,  $\beta=0.408$ ,  $P=1.69 \times 10^{-11}$ ) (Figure S12). At this signal, alleles associated with lower adiponectin are associated with higher *PRKAR2A* and *NICN1* expression level, but lower *AMT* (MIM: 238310) expression level. The strongest eQTL association signal is with *PRKAR2A*, which encodes a subunit of cAMP-dependent protein kinase, an essential regulator of lipid and glucose metabolism that plays a role in energy homeostasis.<sup>54</sup> Although the exome array variants may not be the best representative variant for these association signals, the LD between the exome array variants and the lead eQTL variants is strong, suggesting that *FAM13A*, *PRKAR2A*, *AMT*, and *NICN1* are plausible candidate genes for regulatory effects at these loci.

#### *Candidate pathways*

To further characterize the biological processes and candidate pathways enriched within the identified adiponectin-associated loci, we performed gene set enrichment analyses using PASCAL and EC-DEPICT.<sup>26;</sup><sup>43;</sup><sup>45</sup> The PASCAL analyses assuming single association signals from each locus (MAX score) showed significant ( $P < 5 \times 10^{-5}$ ) evidence for enrichment in gene sets for the adipocyte differentiation-related ATXN1 protein-protein interaction sub-network<sup>55</sup> (Tables S16A-B, S17), and the PASCAL analyses that considered multiple association signals from the same loci (SUM score) provided additional evidence for enrichment in gene sets for abnormal white adipose tissue physiology, decreased gonadal fat pad weight, and the adipogenesis-related NR3C1 protein-protein interaction sub-network (Table S16C-D, S17).<sup>56</sup> None of the gene sets from EC-DEPICT achieved statistical significance ( $FDR < 0.05$ ), possibly due to sample size and the number of loci detected (especially for the analysis restricted to low frequency and rare variants [ $MAF < 5\%$ ]) (Table S18A-B). The enriched processes obtained with these approaches suggest that the adiponectin association signals may alter adipose tissue and obesity-related pathways.

## DISCUSSION

This exome-array based meta-analysis of 265,780 variants in up to 67,739 individuals from four different ancestries identified 30 distinct signals in 20 loci associated with circulating adiponectin levels, including nine loci previously not reported to be associated with adiponectin. Two of the independent signals are located in regions that exhibit extensive LD, and comparison of lead exome array variants to the patterns of association in the previously performed, smaller ADIPOGen GWAS dataset<sup>14</sup> suggests the possible contribution of noncoding variants acting on more distant candidate genes. eQTL colocalizations and evaluation of gene functions helped detect potential genes and mechanisms through which the variants may act to affect adiponectin levels. Candidate genes include *FAM13A*, *SLC39A8*, *PRKAR2A*, *PTH1R* and *HDAC9*. Eight of the association signals have been found to be associated with other obesity and lipid traits; the evidence of association with adiponectin levels also guides interpretation of genes and mechanisms for these traits.

Once an association with a nonsynonymous variant is detected, it is simple to hypothesize a causal connection between the variant, the gene in which it is located, and the examined phenotype. We demonstrate that this assumption is often inaccurate, particularly with regards to common nonsynonymous variants identified through an exome array analysis. For example, the common (MAF=0.41), adiponectin-associated variant, rs2276853, encodes missense variant p.Arg638Gly in *KIF9*, kinesin family member 9, a regulator of spindle dynamics localized to the nuclear envelope that is essential for mitosis.<sup>57</sup> Examination of the surrounding wide LD region using GWAS data from the previous ADIPOGen study<sup>14</sup> showed that moderately correlated variants 300 kb upstream near *PTH1R*, parathyroid hormone receptor 1, exhibited a more significant association with adiponectin levels. Reduced levels of *PTH1R* lead to increased adipocyte differentiation into mature adipocytes responsible for adiponectin

secretion<sup>52</sup>, suggesting that the variant alleles may act to reduce *PTH1R* expression, leading to higher adipocyte differentiation and higher adiponectin levels. *PTH1R* has also been studied extensively in bone marrow, which has been shown to secrete higher levels of adiponectin than white adipose tissue,<sup>58</sup> suggesting that the effect of this locus on adiponectin levels might be mediated by secretion of adiponectin from the bone marrow.

Another example of a nonsynonymous variant representing a potential false lead for causality with adiponectin is rs3087866 (p.Gln299Arg; MAF=0.21) located within an exon of *DALRD3*, a locus that has also been associated with central adiposity.<sup>36</sup> While the exact function is unknown, *DALRD3* encodes a protein with an anticodon 'DALR' binding domain, similar to that of tRNA synthetases. At this locus, however, the strongest colocalized eQTL is for *PRKAR2A*, which encodes a regulatory subunit of protein kinase A. *Prkar2a* knockout mice weigh less than wild-type littermates and are resistant to diet-induced obesity, glucose intolerance, and fatty liver.<sup>59</sup> At the human adiponectin-associated locus, the rs3087866-C allele was associated with decreased adiponectin levels and decreased adipose *PRKAR2A* expression. This observation is consistent with the smaller adipose tissue depots observed in knockout mice<sup>59</sup> and supports the possibility that *PRKAR2A* contributes to the associations with both adiponectin and central adiposity. The other colocalized eQTLs for *AMT* and *NICN1* at this locus were weaker and less clearly relevant to adipose biology.

Exome arrays contain variants with sparse coverage, and trait-associated variants can be located hundreds of kilobases from their target genes. Here, rs10282707 (MAF=0.38), previously associated with HDL-cholesterol<sup>25</sup>, is located within an intron of *SNX13*, sorting nexin 13. This gene belongs to the sorting nexin family, a G protein signaling regulator family of molecules that are involved in intracellular trafficking and regulate G alpha subunits of heterotrimeric G proteins. Located 200 kb downstream of *SNX13*, *HDAC9*

(MIM: 606543) encodes histone deacetylase 9, which alters chromosome structure and affects transcription factor access to DNA. *HDAC9* has been shown to be a negative regulator of adipocyte differentiation<sup>60</sup>. Higher levels of *Hdac9* prevented adipocyte differentiation, and knockout of *Hdac9* in mice protected from adipose tissue dysfunction and systemic metabolic disease during high fat feeding.<sup>61</sup> In humans, the allele associated with higher adiponectin and lower HDL-cholesterol levels may act by reducing *HDAC9* expression or function. The GWAS data helped guide interpretation of candidate genes at this locus.

Using the context of regional LD and existing adiponectin GWAS data from ADIPOGen<sup>14</sup> is not sufficient for mapping of multiple association signals at a locus. For example, *CDH13* encodes an extracellular cadherin-13 receptor that binds to adiponectin,<sup>62</sup> and variants near *CDH13* are well-established to show very strong adiponectin association.<sup>14; 19</sup> The strongest adiponectin-associated variant near *CDH13* from the exome array analysis was rs3865188, located near the *CDH13* promoter, although rs3865188 is in low LD ( $r^2=0.16$ ) with the lead variant in the genome-wide data, rs12051272.<sup>14</sup> The exome array analysis also identified an adiponectin-associated variant (rs145119400, MAF=0.005) nearly 1.5 Mb away within *SLC38A8*, and association analysis conditioning on rs145119400 identified yet another signal 260 kb upstream, within an exon of *CDH13* (rs186440718, MAF=0.003). Neither rs145119400 nor rs186440718 are available in the ADIPOGen consortium data, and rs145119400 is only present in one person in the 1000 Genomes Phase 3 reference panel. Thus, we were not able to determine the number of association signals, nor if these three variants are all tagging the established *CDH13* association signals, nor whether rs145119400 and *SLC38A8* represent a distinct association signal and candidate gene for adiponectin biology. Future genome-wide association data in larger data sets with dense marker maps will provide valuable opportunities to perform more detailed genomic and fine-mapping analyses to identify potential candidate genes and pathways.

Identification of the gene(s) underlying genetic association signals is imperative to translate associated variants to biological processes. One method that has proven useful for the prediction of candidate functional genes is with the detection of colocalized eQTLs in relevant tissues.<sup>63-65</sup> However, determination of colocalized GWAS and eQTL loci requires accurate identification of the variants most strongly associated with the phenotype and gene expression levels in both sets of data. With the sparse coverage of variants in the exome array, other untested variants in low to moderate LD with the lead exome variant may exhibit stronger trait associations leading to false identification of a colocalized eQTL or, more likely, missing a colocalized eQTL signal. Larger and more diverse eQTL studies including both sexes and broader ancestry could help identify additional colocalized association signals. While exome array data can be valuable in identifying low frequency or rare variants present on the array that are often poorly imputed from genotyping arrays, caution should be used in translating association results into candidate functional variants and genes.

Taken together, our results emphasize the value of using exome array analysis for identification of both coding and noncoding signals in discovery of candidate genes relevant for lipid and obesity biology. However, use of genome-wide association data to characterize exome array signals facilitated detection of the LD structure in the association signals, a few of which suggested that more strongly associated variants exist outside exons. As such, caution should be used in the interpretation of results from both exome array and exome sequencing studies.<sup>66</sup> Future GWAS in larger sample sizes will be valuable to validate these results and extend them to additional loci and genes that influence cardiometabolic traits and diseases.

## **SUPPLEMENTAL DATA**

Supplemental data include **17 tables, 12 figures**, and **one supplemental materials** document.

## **ACKNOWLEDGEMENTS**

The authors thank all investigators, staff members, and study participants for their contributions to all the participating studies. Funding information for all participating cohorts are provided in the Supplemental materials file.

J Bork-Jensen and T Hansen were partially funded by the Novo Nordisk Foundation Center for Basic Metabolic Research, an independent Research Center at the University of Copenhagen. RS Fine was supported by NHGRI F31 HG009850. TM Frayling was supported by the European Research Council (grant 323195:GLUCOSEGENES-FP7-IDEAS-ERC). HM Highland was supported by NHLBI T32 HL007055 and T32 HL129982. T Karaderi was supported by the Novo Nordisk Foundation Center for Protein Research (Grant no. NNF17OC0027594 and NNF14CC0001). TO Kilpelainen was supported by the Danish Council for Independent Research (grant number DFF – 6110-00183) and the Novo Nordisk Foundation (grant number NNF17OC0026848). CM Lindgren is supported by the Li Ka Shing Foundation, WT-SSI/John Fell funds and by the NIHR Biomedical Research Centre, Oxford, by Widenlife and NIH (5P50HD028138-27). MI McCarthy is a Wellcome Trust Senior Investigator (WT098381); and a National Institute of Health Research Senior Investigator, and the views expressed in this article are those of the author(s) and not necessarily those of the NHS, the NIHR, or the Department of Health. J Meigs is supported by K24 DK080140. K Mohlke was supported by R01DK072193 and R01DK093757. D Mook-Kanamori is supported by Dutch Science Organization (ZonMW-VENI Grant 916.14.023). KE North was supported by R01DK089256; R01HD057194; U01HG007416; R01DK101855, and AHA 13GRNT16490017. CK Raulerson was supported by National

Institutes of Health, 5T32GM67553. S Ripatti was supported by the Academy of Finland Center of Excellence in Complex Disease Genetics (Grant No 312062) and the Academy of Finland (Grant No 285380). V Salomaa was supported by the Finnish Foundation for Cardiovascular Research. CN Spracklen was supported by the American Heart Association Postdoctoral Fellowships 15POST24470131 and 17POST33650016. JG Wilson is supported by U54GM115428 from the National Institute of General Medical Sciences. LBL Wittemans was supported by Wellcome Trust (WT083442AIA). H Yaghootkar was funded by Diabetes UK RD Lawrence fellowship (grant: 17/ 0005594). KL Young was supported by KL2TR001109.

## **DECLARATION OF INTERESTS**

This work was conducted prior to ME Garcia's current affiliation with the National Heart, Lung, and Blood Institute, and, as such, the views expressed in this article do not represent the views of the NHLBI, NIH, or other government entity. D Mook-Kanamori is a part-time clinical research consultant for Metabolon, Inc. MA Nalls' participation is supported by a consulting contract between Data Tecnica International and the National Institute on Aging, National Institutes of Health. V Salomaa has participated in a conference trip and received an honorarium sponsored by Novo Nordisk.

## **WEB RESOURCES**

EC-DEPICT: <https://github.com/RebeccaFine/obesity-ec-depict>.

Pascal: <https://www2.unil.ch/cbg/index.php?title=Pascal>

Online Mendelian Inheritance in Man (OMIM): <http://www.omim.org>

Illumina HumanExome Beadchip Array: [https://genome.sph.umich.edu/wiki/Exome\\_Chip\\_Design](https://genome.sph.umich.edu/wiki/Exome_Chip_Design)

PhenoScanner: <http://www.phenoscanter.medschl.cam.ac.uk>

## **DATA AVAILABILITY**

Summary genetic association results can be found at <http://www.thelooslab.com/#data>. All other relevant data are in the paper and Supporting Information files.

## REFERENCES

1. Azrad, M., Gower, B.A., Hunter, G.R., and Nagy, T.R. (2013). Racial differences in adiponectin and leptin in healthy premenopausal women. *Endocrine* 43, 586-592.
2. Wang, X., Bao, W., Liu, J., Ouyang, Y.Y., Wang, D., Rong, S., Xiao, X., Shan, Z.L., Zhang, Y., Yao, P., et al. (2013). Inflammatory markers and risk of type 2 diabetes: a systematic review and meta-analysis. *Diabetes care* 36, 166-175.
3. Breitfeld, J., Stumvoll, M., and Kovacs, P. (2012). Genetics of adiponectin. *Biochimie* 94, 2157-2163.
4. Goldstein, B.J., Scalia, R.G., and Ma, X.L. (2009). Protective vascular and myocardial effects of adiponectin. *Nature clinical practice Cardiovascular medicine* 6, 27-35.
5. Povel, C.M., Boer, J.M., and Feskens, E.J. (2011). Shared genetic variance between the features of the metabolic syndrome: heritability studies. *Molecular genetics and metabolism* 104, 666-669.
6. Henneman, P., Aulchenko, Y.S., Frants, R.R., Zorkoltseva, I.V., Zillikens, M.C., Frolich, M., Oostra, B.A., van Dijk, K.W., and van Duijn, C.M. (2010). Genetic architecture of plasma adiponectin overlaps with the genetics of metabolic syndrome-related traits. *Diabetes care* 33, 908-913.
7. Au Yeung, S.L., and Schooling, C.M. (2018). Adiponectin and coronary artery disease risk: A bi-directional Mendelian randomization study. *International journal of cardiology* 268, 222-226.
8. Yaghootkar, H., Lamina, C., Scott, R.A., Dastani, Z., Hivert, M.F., Warren, L.L., Stancakova, A., Buxbaum, S.G., Lyytikainen, L.P., Henneman, P., et al. (2013). Mendelian randomization studies do not support a causal role for reduced circulating adiponectin levels in insulin resistance and type 2 diabetes. *Diabetes* 62, 3589-3598.
9. Mente, A., Meyre, D., Lanktree, M.B., Heydarpour, M., Davis, A.D., Miller, R., Gerstein, H., Hegele, R.A., Yusuf, S., and Anand, S.S. (2013). Causal relationship between adiponectin and metabolic traits: a Mendelian randomization study in a multiethnic population. *PLoS one* 8, e66808.
10. Gao, H., Fall, T., van Dam, R.M., Flyvbjerg, A., Zethelius, B., Ingelsson, E., and Hagg, S. (2013). Evidence of a causal relationship between adiponectin levels and insulin sensitivity: a Mendelian randomization study. *Diabetes* 62, 1338-1344.
11. Xia, J.Y., Sun, K., Hepler, C., Ghaben, A.L., Gupta, R.K., An, Y.A., Holland, W.L., Morley, T.S., Adams, A.C., Gordillo, R., et al. (2018). Acute loss of adipose tissue-derived adiponectin triggers immediate metabolic deterioration in mice. *Diabetologia* 61, 932-941.
12. Holland, W.L., Miller, R.A., Wang, Z.V., Sun, K., Barth, B.M., Bui, H.H., Davis, K.E., Bikman, B.T., Halberg, N., Rutkowski, J.M., et al. (2011). Receptor-mediated activation of ceramidase activity initiates the pleiotropic actions of adiponectin. *Nature medicine* 17, 55-63.



13. Sattar, N., and Nelson, S.M. (2008). Adiponectin, diabetes, and coronary heart disease in older persons: unraveling the paradox. *The Journal of clinical endocrinology and metabolism* 93, 3299-3301.
14. Dastani, Z., Hivert, M.F., Timpson, N., Perry, J.R., Yuan, X., Scott, R.A., Henneman, P., Heid, I.M., Kizer, J.R., Lyytikäinen, L.P., et al. (2012). Novel loci for adiponectin levels and their influence on type 2 diabetes and metabolic traits: a multi-ethnic meta-analysis of 45,891 individuals. *PLoS genetics* 8, e1002607.
15. Nawrocki, A.R., Rajala, M.W., Tomas, E., Pajvani, U.B., Saha, A.K., Trumbauer, M.E., Pang, Z., Chen, A.S., Ruderman, N.B., Chen, H., et al. (2006). Mice lacking adiponectin show decreased hepatic insulin sensitivity and reduced responsiveness to peroxisome proliferator-activated receptor gamma agonists. *The Journal of biological chemistry* 281, 2654-2660.
16. Chuang, L.M., Chiu, Y.F., Sheu, W.H., Hung, Y.J., Ho, L.T., Grove, J., Rodriguez, B., Quertermous, T., Chen, Y.D., Hsiung, C.A., et al. (2004). Biethnic comparisons of autosomal genomic scan for loci linked to plasma adiponectin in populations of Chinese and Japanese origin. *The Journal of clinical endocrinology and metabolism* 89, 5772-5778.
17. Comuzzie, A.G., Funahashi, T., Sonnenberg, G., Martin, L.J., Jacob, H.J., Black, A.E., Maas, D., Takahashi, M., Kihara, S., Tanaka, S., et al. (2001). The genetic basis of plasma variation in adiponectin, a global endophenotype for obesity and the metabolic syndrome. *The Journal of clinical endocrinology and metabolism* 86, 4321-4325.
18. Lindsay, R.S., Funahashi, T., Krakoff, J., Matsuzawa, Y., Tanaka, S., Kobes, S., Bennett, P.H., Tataranni, P.A., Knowler, W.C., and Hanson, R.L. (2003). Genome-wide linkage analysis of serum adiponectin in the Pima Indian population. *Diabetes* 52, 2419-2425.
19. Wu, Y., Gao, H., Li, H., Tabara, Y., Nakatochi, M., Chiu, Y.F., Park, E.J., Wen, W., Adair, L.S., Borja, J.B., et al. (2014). A meta-analysis of genome-wide association studies for adiponectin levels in East Asians identifies a novel locus near WDR11-FGFR2. *Human molecular genetics* 23, 1108-1119.
20. Richards, J.B., Waterworth, D., O'Rahilly, S., Hivert, M.F., Loos, R.J., Perry, J.R., Tanaka, T., Timpson, N.J., Semple, R.K., Soranzo, N., et al. (2009). A genome-wide association study reveals variants in ARL15 that influence adiponectin levels. *PLoS genetics* 5, e1000768.
21. Mahajan, A., Wessel, J., Willems, S.M., Zhao, W., Robertson, N.R., Chu, A.Y., Gan, W., Kitajima, H., Taliun, D., Rayner, N.W., et al. (2018). Refining the accuracy of validated target identification through coding variant fine-mapping in type 2 diabetes. *Nature genetics* 50, 559-571.
22. Feng, S., Liu, D., Zhan, X., Wing, M.K., and Abecasis, G.R. (2014). RAREMETAL: fast and powerful meta-analysis for rare variants. *Bioinformatics (Oxford, England)* 30, 2828-2829.
23. Zhan, X., Hu, Y., Li, B., Abecasis, G.R., and Liu, D.J. (2016). RVTESTS: an efficient and comprehensive tool for rare variant association analysis using sequence data. *Bioinformatics (Oxford, England)* 32, 1423-1426.
24. Winkler, T.W., Day, F.R., Croteau-Chonka, D.C., Wood, A.R., Locke, A.E., Magi, R., Ferreira, T., Fall, T., Graff, M., Justice, A.E., et al. (2014). Quality control and conduct of genome-wide association meta-analyses. *Nature protocols* 9, 1192-1212.

25. Liu, D.J., Peloso, G.M., Yu, H., Butterworth, A.S., Wang, X., Mahajan, A., Saleheen, D., Emdin, C., Alam, D., Alves, A.C., et al. (2017). Exome-wide association study of plasma lipids in >300,000 individuals. *Nature genetics* 49, 1758-1766.
26. Turcot, V., Lu, Y., Highland, H.M., Schurmann, C., Justice, A.E., Fine, R.S., Bradfield, J.P., Esko, T., Giri, A., Graff, M., et al. (2018). Protein-altering variants associated with body mass index implicate pathways that control energy intake and expenditure in obesity. *Nature genetics* 50, 26-41.
27. Liu, D.J., Peloso, G.M., Zhan, X., Holmen, O.L., Zawistowski, M., Feng, S., Nikpay, M., Auer, P.L., Goel, A., Zhang, H., et al. (2014). Meta-analysis of gene-level tests for rare variant association. *Nature genetics* 46, 200-204.
28. Winkler, T.W., Kutalik, Z., Gorski, M., Lottaz, C., Kronenberg, F., and Heid, I.M. (2015). EasyStrata: evaluation and visualization of stratified genome-wide association meta-analysis data. *Bioinformatics (Oxford, England)* 31, 259-261.
29. Wu, M.C., Lee, S., Cai, T., Li, Y., Boehnke, M., and Lin, X. (2011). Rare-variant association testing for sequencing data with the sequence kernel association test. *American journal of human genetics* 89, 82-93.
30. Price, A.L., Kryukov, G.V., de Bakker, P.I., Purcell, S.M., Staples, J., Wei, L.J., and Sunyaev, S.R. (2010). Pooled association tests for rare variants in exon-resequencing studies. *American journal of human genetics* 86, 832-838.
31. Purcell, S.M., Moran, J.L., Fromer, M., Ruderfer, D., Solovieff, N., Roussos, P., O'Dushlaine, C., Chambert, K., Bergen, S.E., Kahler, A., et al. (2014). A polygenic burden of rare disruptive mutations in schizophrenia. *Nature* 506, 185-190.
32. Kiezun, A., Garimella, K., Do, R., Stitzel, N.O., Neale, B.M., McLaren, P.J., Gupta, N., Sklar, P., Sullivan, P.F., Moran, J.L., et al. (2012). Exome sequencing and the genetic basis of complex traits. *Nature genetics* 44, 623-630.
33. Aschard, H., Vilhjalmsdottir, B.J., Joshi, A.D., Price, A.L., and Kraft, P. (2015). Adjusting for heritable covariates can bias effect estimates in genome-wide association studies. *American journal of human genetics* 96, 329-339.
34. Day, F.R., Loh, P.R., Scott, R.A., Ong, K.K., and Perry, J.R. (2016). A Robust Example of Collider Bias in a Genetic Association Study. *American journal of human genetics* 98, 392-393.
35. Willer, C.J., Speliotes, E.K., Loos, R.J., Li, S., Lindgren, C.M., Heid, I.M., Berndt, S.I., Elliott, A.L., Jackson, A.U., Lamina, C., et al. (2009). Six new loci associated with body mass index highlight a neuronal influence on body weight regulation. *Nature genetics* 41, 25-34.
36. Justice, A.E., Karaderi, T., Highland, H.M., Young, K.L., Graff, M., Lu, Y., Turcot, V., Auer, P.L., Fine, R.S., Guo, X., et al. (2018). PROTEIN-CODING VARIANTS IMPLICATE NOVEL GENES RELATED TO LIPID HOMEOSTASIS CONTRIBUTING TO BODY FAT DISTRIBUTION. *bioRxiv*.
37. Wheeler, E., Leong, A., Liu, C.T., Hivert, M.F., Strawbridge, R.J., Podmore, C., Li, M., Yao, J., Sim, X., Hong, J., et al. (2017). Impact of common genetic determinants of Hemoglobin A1c on type 2 diabetes risk and diagnosis in ancestrally diverse populations: A transethnic genome-wide meta-analysis. *PLoS medicine* 14, e1002383.
38. Manning, A.K., Hivert, M.F., Scott, R.A., Grimsby, J.L., Bouatia-Naji, N., Chen, H., Rybin, D., Liu, C.T., Bielak, L.F., Prokopenko, I., et al. (2012). A genome-wide approach accounting

- for body mass index identifies genetic variants influencing fasting glycemic traits and insulin resistance. *Nature genetics* 44, 659-669.
39. Scott, R.A., Lagou, V., Welch, R.P., Wheeler, E., Montasser, M.E., Luan, J., Magi, R., Strawbridge, R.J., Rehnberg, E., Gustafsson, S., et al. (2012). Large-scale association analyses identify new loci influencing glycemic traits and provide insight into the underlying biological pathways. *Nature genetics* 44, 991-1005.
  40. Scott, R.A., Scott, L.J., Magi, R., Marullo, L., Gaulton, K.J., Kaakinen, M., Pervjakova, N., Pers, T.H., Johnson, A.D., Eicher, J.D., et al. (2017). An Expanded Genome-Wide Association Study of Type 2 Diabetes in Europeans. *Diabetes*.
  41. Civelek, M., Wu, Y., Pan, C., Raulerson, C.K., Ko, A., He, A., Tilford, C., Saleem, N.K., Stancakova, A., Scott, L.J., et al. (2017). Genetic regulation of adipose gene expression and integration with GWAS loci and cardio-metabolic traits. *American journal of human genetics* 100, 428-443.
  42. (2013). The Genotype-Tissue Expression (GTEx) project. *Nature genetics* 45, 580-585.
  43. Pers, T.H., Karjalainen, J.M., Chan, Y., Westra, H.J., Wood, A.R., Yang, J., Lui, J.C., Vedantam, S., Gustafsson, S., Esko, T., et al. (2015). Biological interpretation of genome-wide association studies using predicted gene functions. *Nat Commun* 6, 5890.
  44. Marouli, E., Graff, M., Medina-Gomez, C., Lo, K.S., Wood, A.R., Kjaer, T.R., Fine, R.S., Lu, Y., Schurmann, C., Highland, H.M., et al. (2017). Rare and low-frequency coding variants alter human adult height. *Nature* 542, 186-190.
  45. Lamparter, D., Marbach, D., Rueedi, R., Kutalik, Z., and Bergmann, S. (2016). Fast and Rigorous Computation of Gene and Pathway Scores from SNP-Based Summary Statistics. *PLoS computational biology* 12, e1004714.
  46. Moayyeri, A., Hammond, C.J., Valdes, A.M., and Spector, T.D. (2013). Cohort Profile: TwinsUK and healthy ageing twin study. *International journal of epidemiology* 42, 76-85.
  47. Boyd, A., Golding, J., Macleod, J., Lawlor, D.A., Fraser, A., Henderson, J., Molloy, L., Ness, A., Ring, S., and Davey Smith, G. (2013). Cohort Profile: the 'children of the 90s'--the index offspring of the Avon Longitudinal Study of Parents and Children. *International journal of epidemiology* 42, 111-127.
  48. Pain, O., Dudbridge, F., and Ronald, A. (2018). Are your covariates under control? How normalization can re-introduce covariate effects. *European journal of human genetics : EJHG* 26, 1194-1201.
  49. Hivert, M.F., Manning, A.K., McAteer, J.B., Florez, J.C., Dupuis, J., Fox, C.S., O'Donnell, C.J., Cupples, L.A., and Meigs, J.B. (2008). Common variants in the adiponectin gene (ADIPOQ) associated with plasma adiponectin levels, type 2 diabetes, and diabetes-related quantitative traits: the Framingham Offspring Study. *Diabetes* 57, 3353-3359.
  50. Jee, S.H., Sull, J.W., Lee, J.E., Shin, C., Park, J., Kimm, H., Cho, E.Y., Shin, E.S., Yun, J.E., Park, J.W., et al. (2010). Adiponectin concentrations: a genome-wide association study. *American journal of human genetics* 87, 545-552.
  51. Pickrell, J.K., Berisa, T., Liu, J.Z., Segurel, L., Tung, J.Y., and Hinds, D.A. (2016). Detection and interpretation of shared genetic influences on 42 human traits. *Nature genetics* 48, 709-717.

52. Fan, Y., Hanai, J.I., Le, P.T., Bi, R., Maridas, D., DeMambro, V., Figueroa, C.A., Kir, S., Zhou, X., Mannstadt, M., et al. (2017). Parathyroid Hormone Directs Bone Marrow Mesenchymal Cell Fate. *Cell metabolism* 25, 661-672.
53. Lundback, V., Kulyte, A., Strawbridge, R.J., Ryden, M., Arner, P., Marcus, C., and Dahlman, I. (2018). FAM13A and POM121C are candidate genes for fasting insulin: functional follow-up analysis of a genome-wide association study. *Diabetologia* 61, 1112-1123.
54. London, E., Nesterova, M., and Stratakis, C.A. (2017). Acute vs chronic exposure to high fat diet leads to distinct regulation of PKA. *Journal of molecular endocrinology* 59, 1-12.
55. Chu, A.Y., Deng, X., Fisher, V.A., Drong, A., Zhang, Y., Feitosa, M.F., Liu, C.T., Weeks, O., Choh, A.C., Duan, Q., et al. (2017). Multiethnic genome-wide meta-analysis of ectopic fat depots identifies loci associated with adipocyte development and differentiation. *Nature genetics* 49, 125-130.
56. Lee, M.J., and Fried, S.K. (2014). The glucocorticoid receptor, not the mineralocorticoid receptor, plays the dominant role in adipogenesis and adipokine production in human adipocytes. *International journal of obesity (2005)* 38, 1228-1233.
57. Tikhonenko, I., Magidson, V., Graf, R., Khodjakov, A., and Koonce, M.P. (2013). A kinesin-mediated mechanism that couples centrosomes to nuclei. *Cellular and molecular life sciences : CMLS* 70, 1285-1296.
58. Cawthorn, W.P., Scheller, E.L., Learman, B.S., Parlee, S.D., Simon, B.R., Mori, H., Ning, X., Bree, A.J., Schell, B., Broome, D.T., et al. (2014). Bone marrow adipose tissue is an endocrine organ that contributes to increased circulating adiponectin during caloric restriction. *Cell metabolism* 20, 368-375.
59. London, E., Nesterova, M., Sinaii, N., Szarek, E., Chanturiya, T., Mastroyannis, S.A., Gavrilova, O., and Stratakis, C.A. (2014). Differentially regulated protein kinase A (PKA) activity in adipose tissue and liver is associated with resistance to diet-induced obesity and glucose intolerance in mice that lack PKA regulatory subunit type IIalpha. *Endocrinology* 155, 3397-3408.
60. Chatterjee, T.K., Idelman, G., Blanco, V., Blomkalns, A.L., Piegore, M.G., Jr., Weintraub, D.S., Kumar, S., Rajsheker, S., Manka, D., Rudich, S.M., et al. (2011). Histone deacetylase 9 is a negative regulator of adipogenic differentiation. *The Journal of biological chemistry* 286, 27836-27847.
61. Chatterjee, T.K., Basford, J.E., Knoll, E., Tong, W.S., Blanco, V., Blomkalns, A.L., Rudich, S., Lentsch, A.B., Hui, D.Y., and Weintraub, N.L. (2014). HDAC9 knockout mice are protected from adipose tissue dysfunction and systemic metabolic disease during high-fat feeding. *Diabetes* 63, 176-187.
62. Williams, A.S., Kasahara, D.I., Verbout, N.G., Fedulov, A.V., Zhu, M., Si, H., Wurmbrand, A.P., Hug, C., Ranscht, B., and Shore, S.A. (2012). Role of the adiponectin binding protein, T-cadherin (Cdh13), in allergic airways responses in mice. *PLoS one* 7, e41088.
63. Conde, L., Bracci, P.M., Richardson, R., Montgomery, S.B., and Skibola, C.F. (2013). Integrating GWAS and expression data for functional characterization of disease-associated SNPs: an application to follicular lymphoma. *American journal of human genetics* 92, 126-130.
64. Albert, F.W., and Kruglyak, L. (2015). The role of regulatory variation in complex traits and disease. *Nature reviews Genetics* 16, 197-212.

65. Braenne, I., Civelek, M., Vilne, B., Di Narzo, A., Johnson, A.D., Zhao, Y., Reiz, B., Codoni, V., Webb, T.R., Foroughi Asl, H., et al. (2015). Prediction of Causal Candidate Genes in Coronary Artery Disease Loci. *Arteriosclerosis, thrombosis, and vascular biology* 35, 2207-2217.
66. Huyghe, J.R., Jackson, A.U., Fogarty, M.P., Buchkovich, M.L., Stancakova, A., Stringham, H.M., Sim, X., Yang, L., Fuchsberger, C., Cederberg, H., et al. (2013). Exome array analysis identifies new loci and low-frequency variants influencing insulin processing and secretion. *Nature genetics* 45, 197-201.

## FIGURE TITLES AND LEGENDS

### **Figure 1: Loci in adiponectin exome-wide meta-analysis located within broader trait-associated regions.**

A) *KIF9* locus and B) *GIMAP7* locus. Each point represents a variant in the meta-analysis, plotted with hg19 genomic position on the x-axis and *P*-value (on a  $-\log_{10}$  scale) on the y-axis. The upper plots show the current exome-wide meta-analysis, and the lower plots show the genome-wide ADIPOGen consortium meta-analysis (Dastani, et al., 2012). In each plot, the lead variant identified in the exome array meta-analysis is represented in purple, and the color of all other variants indicate the LD with the lead variant in European ancestry haplotypes from the 1000 Genome Phase 3 reference panel. In both examples, the lead variant from the exome-wide analysis may not be the best representative of the adiponectin-associated signal.

### **Figure 2: Subcutaneous adipose eQTL for *PRKAR2A* colocalizes with the *DALRD3* adiponectin exome-wide locus.**

rs3087866 (purple diamond) shows the strongest association with adiponectin levels in the exome-wide meta-analysis (top plot). In the ADIPOGen genome-wide adiponectin meta-analysis (middle plot; Dastani, et al., 2012), rs3087866 and 85 proxy variants ( $r^2 > 0.80$ ; 1000Gp3) are nominally associated with adiponectin levels. The same variants exhibit the strongest association with expression of *PRKAR2A* in subcutaneous adipose tissue (lower plot; Civelek, et al., 2017). Colocalized eQTL signals are also observed for *AMT* and *NICN1* (see Figure S12). Each point represents a variant, plotted with hg 19 genomic position on the x-axis and *P*-value (on a  $-\log_{10}$  scale) on the y-axis. The color of all other variants indicates the LD with the lead variant in European ancestry haplotypes from the 1000 Genome Phase 3 reference panel.

TABLES

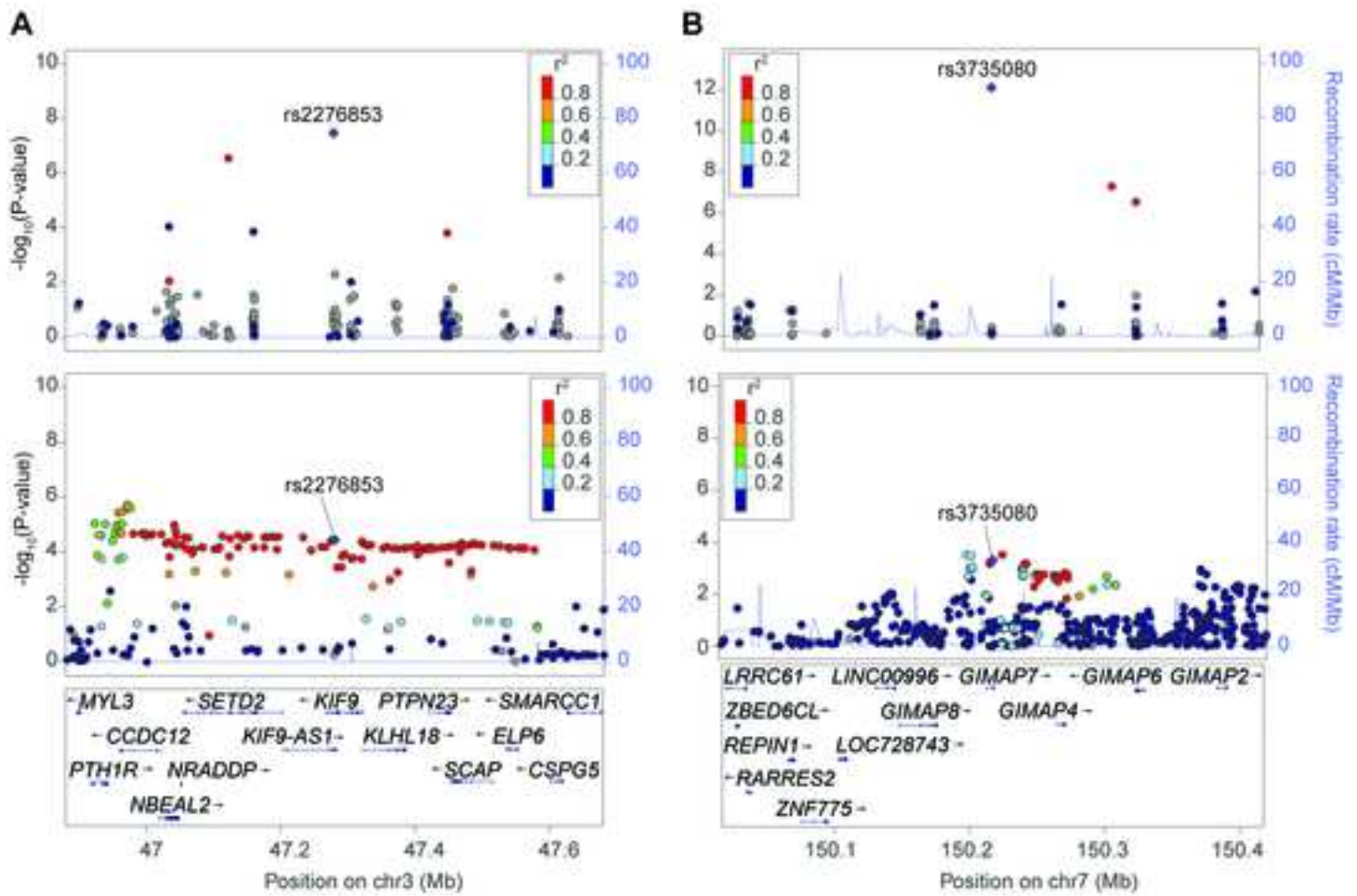
0  
1  
2

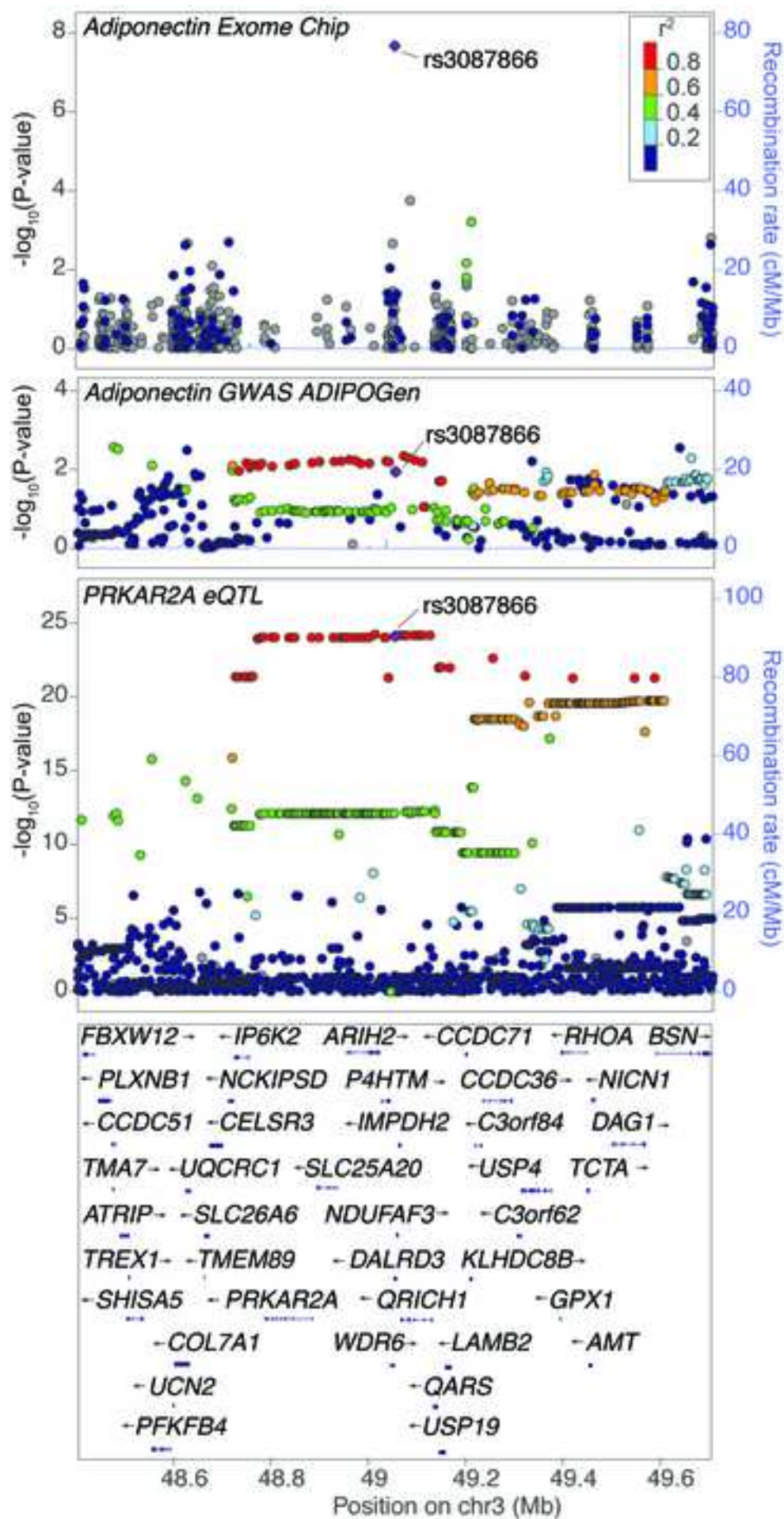
Table 1: Adiponectin loci in sex-combined and sex-specific meta-analyses (Additive, adjBMI)																
Variant	Chr	Position	Nearest gene	Annotation	EA	EAF	Sex-combined			Women			Men			Sex diff. P <sup>a</sup>
							Effect	P	N	Effect	P	N	Effect	P	N	
<b>Loci achieving exome-wide significance</b>																
rs2276853	3	47,282,303	KIF9	Missense (p.Arg638Gly)	A	0.594	-0.033	3.35E-08	65,521	-0.039	1.98E-06	31,788	-0.029	4.18E-04	33,733	4.17E-01
rs3087866	3	49,054,692	DALRD3	Missense (p.Gln299Arg)	C	0.786	-0.040	2.14E-08	65,521	-0.034	5.88E-04	31,788	-0.046	3.67E-06	33,733	3.86E-01
rs13133548	4	89,740,128	FAM13A	Intronic	A	0.489	-0.039	5.91E-12	65,521	-0.033	3.24E-05	31,788	-0.041	1.98E-07	33,733	4.61E-01
rs13107325	4	103,188,709	SLC39A8	Missense (p.Ala391Thr)	T	0.047	0.072	1.05E-07	59,606	0.078	1.13E-05	31,788	0.050	1.25E-02	33,733	2.98E-01
rs10282707	7	17,911,038	SNX13	Intronic	T	0.383	-0.040	1.96E-10	56,826	-0.024	1.07E-02	24,421	-0.053	3.44E-10	32,405	2.00E-02
rs3735080	7	150,217,309	GIMAP7	Missense (p.Arg83Cys)	T	0.245	-0.049	7.70E-13	65,521	-0.036	2.72E-04	31,788	-0.057	6.22E-10	33,733	1.05E-01
rs11993554	8	145,111,529	OPLAH	Synonymous (p.Phe612Phe)	G	0.101	0.030	3.75E-03	61,431	0.076	9.76E-08	29,427	-0.011	4.66E-01	32,004	2.52E-05
rs10861661	12	107,174,646	RIC8B	Intronic	C	0.229	-0.040	1.75E-09	59,489	-0.035	4.74E-04	27,455	-0.046	3.17E-06	32,034	4.42E-01
rs145119400	16	84,075,593	SLC38A8	Missense (p.Pro57Leu)	A	0.005	-0.300	8.95E-13	59,107	-0.306	1.78E-03	28,412	-0.296	1.80E-10	30,695	9.23E-01
<b>Previously reported loci achieving exome-wide significance</b>																
rs2791552	1	219,652,033	LYPLAL1	Intergenic	C	0.676	0.676	1.75E-14	55,387	-0.055	8.97E-09	26,391	-0.054	7.16E-09	28,996	9.68E-01
rs2943641	2	227,093,745	IRS1	Intergenic	C	0.646	0.646	1.76E-21	65,521	-0.048	2.21E-08	31,788	-0.069	2.56E-16	33,733	7.30E-02
rs13303	3	52,558,008	STAB1	Missense (p.Met2506Thr)	C	0.569	0.569	2.69E-21	61,431	0.061	8.28E-13	29,427	0.060	4.74E-12	32,004	9.53E-01
rs17366568	3	186,570,453	ADIPOQ	ncRNA/exonic	A	0.118	0.118	1.43E-145	51,153	-0.216	1.61E-64	31,788	-0.239	5.86E-89	25,849	1.97E-01
rs4311394	5	53,300,662	ARL15	Intronic	G	0.257	0.257	1.68E-10	59,931	-0.046	1.54E-06	28,914	-0.044	3.84E-06	31,017	9.13E-01
rs7134375	12	20,473,758	PDE3A	Intergenic	A	0.410	0.410	3.69E-20	65,521	0.054	2.88E-11	31,788	0.053	5.36E-11	33,733	9.14E-01
rs11057405	12	122,781,897	CLIP1	Intronic	A	0.086	0.086	2.90E-14	65,521	-0.092	1.74E-10	31,788	-0.068	1.24E-06	33,733	2.29E-01
rs11057353	12	124,265,687	DNAH10	Missense (p.Ser167Pro)	C	0.645	0.645	2.74E-19	65,521	0.061	3.47E-13	31,788	0.047	2.19E-08	33,733	2.17E-01
rs2925979	16	81,534,790	CMIP	Intronic	C	0.693	0.693	1.38E-37	61,801	0.093	6.72E-26	29,767	0.072	1.91E-16	32,034	8.80E-02
rs3865188	16	82,650,717	CDH13	Intergenic	T	0.472	0.472	1.14E-08	59,420	-0.042	7.28E-07	28,616	-0.027	1.11E-03	30,804	2.27E-01
rs4805885	19	33,906,123	PEPD	Intronic	C	0.603	0.603	2.85E-25	61,431	0.076	4.63E-19	29,427	0.052	5.77E-28	32,004	5.20E-02
Loci achieving exome-wide significance (P<2E-07) in sex-combined and/or sex-specific all-ancestry meta-analyses. Beta effect size from an additive model corresponding to the effect allele for inverse-normal transformed adiponectin levels adjusted for age, BMI, and other study-specific covariates. The smallest P value for each variant is shown in bold. Physical positions based on hg19. Chr, chromosome; EA, effect allele; EAF, effect allele frequency; N, sample size.																
<sup>a</sup> Test for sex difference; values significant at the table-wide Bonferroni threshold of 0.05/20 = 2.5E-03																

3

Table 2. Biological candidate genes at previously unreported adiponectin-associated loci								
Lead variant	EA	Nearest gene	N variants $r^2 \geq 0.80$ (distance kb)	N variants $r^2 \geq 0.60$ (distance kb)	Function/Nonsynonymous Variants ( $r^2 > 0.8$ )	Adipose eQTL Gene ( $P < 5 \times 10^{-8}$ )	Other Trait Associations ( $P < 1 \times 10^{-4}$ )	Literature Candidate
rs2276853	0.59	<i>KIF9</i>	330 (597 kb)	353 (597 kb)	<i>KIF9</i> (p.Arg638Gly)*; <i>SETD2</i> (p.Pro1918His); <i>SCAP</i> (p.Val543Ile); <i>NBEAL2</i> (p.Arg511Gly); <i>PTPN23</i> (p.Ala818Thr)	-	WHRadjBMI, Adiponectin, T2D	<i>PTH1R</i>
rs3087866	0.79	<i>DALRD3</i>	73 (819 kb)	210 (833 kb)	<i>DALRD3</i> (p.Gln299Arg)*	<i>AMT</i> , <i>NICN1</i> , <i>PRKAR2A</i> , <i>QRICH1</i>	FFMI, WHRadjBMI, Adiponectin, Menarche, T2D	<i>PRKAR2A</i>
rs13133548	0.49	<i>FAM13A</i>	41 (35 kb)	54 (35 kb)	-	<i>FAM13A</i>	BF%, HC, HDL, WHRadjBMI, Adiponectin, BMI, T2D, TG	<i>FAM13A</i>
rs13107325	0.05	<i>SLC39A8</i>	3 (51 kb)	4 (196 kb)	<i>SLC39A8</i> (p.Ala391Thr)*	-	BMI, BF%, DBP, FFMI, HC, HDL, HTN, SBP, WC, WHRadjBMI, Adiponectin, TG	<i>SLC39A8</i>
rs10282707	0.38	<i>SNX13</i>	9 (104 kb)	16 (130 kb)	-	-	HDL, TC	<i>HDAC9</i>
rs3735080	0.24	<i>GIMAP7</i>	278 (119 kb)	294 (146 kb)	<i>GIMAP7</i> (p.Arg83Cys)*; <i>GIMAP6</i> (p.Gly241Ser)	-	DBP, FFMI, HTN, SBP	<i>REPIN1</i> ; <i>RARRES2</i>
rs11993554	0.10	<i>OPLAH</i>	37 (57 kb)	122 (107 kb)	<i>OPLAH</i> (p.Phe612Phe*, p.Arg31Gln, p.Val340Ile, p.Ser284Arg); <i>EPPK1</i> (p.Arg936Trp)	-	WHRadjBMI	<i>MAF1</i>
rs10861661	0.23	<i>RIC8B</i>	14 (134 kb)	16 (134 kb)	-	-	WHRadjBMI, HDL, TG, HC	<i>CRY1</i>
rs145119400	0.005	<i>SLC38A8</i>	2 (257 kb)	2 (257 kb)	<i>SLC38A8</i> (p.Pro57Leu)*	-	-	<i>CDH13</i> ; <i>MBTPS1</i>
Biological candidate genes at each of the loci previously not shown to be association with adiponectin. Number of variants in moderate to strong linkage disequilibrium and the distance spanned obtained using data from 1000 Genomes Phase 3 and build hg19 (LDLink). Nonsynonymous variants noted with an asterisk (*) are the lead variants identified at each locus. eQTLs were identified in METSIM subcutaneous adipose and/or GTEx subcutaneous or visceral adipose tissues (see Table S15). Other trait associations were identified from available summary statistics from the ADIPOGen, DIAGRAM, GIANT and GLGC consortia, along with the UK Biobank (see Table S9-11).								
BMI, body mass index; BF%, body fat percentage; DBP, diastolic blood pressure; FFMI, fat free mass index; HC, hip circumference; HDL, high density lipoprotein cholesterol; HTN, hypertension; Menarche, age at menarche; SBP, systolic blood pressure; WC, waist circumference; WHRadjBMI, waist-hip-ratio adjusted for BMI								









Click here to access/download

**Supplemental Text and Figures**  
Adiponectin ExCh Supplementary Materials  
24Apr2019.pdf



Click here to access/download

**Supplemental Movies and Spreadsheets**  
Adiponectin ExCh Supplementary Tables  
24Apr2019.xlsx



## AJHG DECLARATION OF INTERESTS POLICY

Transparency is essential for a reader's trust in the scientific process and for the credibility of published articles. At AJHG, we feel that disclosure of competing interests is a critical aspect of transparency. Therefore, we ask that all authors disclose any financial or other interests related to the submitted work that (1) could affect or have the perception of affecting the author's objectivity, or (2) could influence or have the perception of influencing the content of the article, in a "Declaration of Interests" section.

### **What types of articles does this apply to?**

We ask that you disclose competing interests for all submitted content, including research articles as well as front matter (e.g., Reviews, Previews, etc.) by completing and submitting the "Declaration of Interests" form below. We also ask that you include a "Declaration of Interests" section in the text of all research articles even if there are no interests declared. For front matter, we ask you to include a "Declaration of Interests" section only when you have information to declare.

### **What should I disclose?**

We ask that you and all authors disclose any personal financial interests (examples include stocks or shares in companies with interests related to the submitted work or consulting fees from companies that could have interests related to the work), professional affiliations, advisory positions, board memberships, or patent holdings that are related to the subject matter of the contribution. As a guideline, you need to declare an interest for (1) any affiliation associated with a payment or financial benefit exceeding \$10,000 p.a. or 5% ownership of a company or (2) research funding by a company with related interests. You do not need to disclose diversified mutual funds, 401ks, or investment trusts.

### **Where do I declare competing interests?**

Competing interests should be disclosed on the "Declaration of Interests" form as well as in the last section of the manuscript before the "References" section, under the heading "Declaration of Interests". This section should include financial or other competing interests as well as affiliations that are not included in the author list.

Examples of "Declaration of Interests" language include:

"AUTHOR is an employee and shareholder of COMPANY."

"AUTHOR is a founder of COMPANY and a member of its scientific advisory board."

*NOTE:* Primary affiliations should be included on the title page of the manuscript with the author list and do not need to be included in the "Declaration of Interests" section. Funding sources should be included in the "Acknowledgments" section and also do not need to be included in the "Declaration of Interests" section. (A small number of front-matter article types do not include an "Acknowledgments" section. For these articles, reporting of funding sources is not required.)

### **What if there are no competing interests to declare?**

For *research* articles, if you have no competing interests to declare, please note that in a "Declaration of Interests" section with the following wording:

"The authors declare no competing interests."

*Front-matter* articles do not need to include this section when there are no competing interests to declare.

## AJHG DECLARATION OF INTERESTS FORM

If submitting materials via Editorial Manager, please complete this form and upload with your final submission. Otherwise, please e-mail as an attachment to the editor handling your manuscript.

***Please complete each section of the form and insert any necessary “Declaration of Interest” statement in the text box at the end of the form. A matching statement should be included in a “Declaration of Interest” section in the manuscript.***

### **Institutional Affiliations**

We ask that you list the current institutional affiliations of all authors, including academic, corporate, and industrial, on the title page of the manuscript. ***Please select one of the following:***

- All affiliations are listed on the title page of the manuscript.
- I or other authors have additional affiliations that we have noted in the “Declaration of Interests” section of the manuscript and on this form below.

### **Funding Sources**

We ask that you disclose all funding sources for the research described in this work. ***Please confirm the following:***

- All funding sources for this study are listed in the “Acknowledgments” section of the manuscript.\*

\*A small number of front-matter article types do not include an “Acknowledgments” section. For these, reporting funding sources is not required.

### **Competing Financial Interests**

We ask that authors disclose any financial interests, including financial holdings, professional affiliations, advisory positions, board memberships, receipt of consulting fees etc., that:

- (1) could affect or have the perception of affecting the author’s objectivity, *or*
- (2) could influence or have the perception of influencing the content of the article.

***Please select one of the following:***

- The authors have no financial interests to declare.
- I or other authors have noted any financial interests in the “Declaration of Interests” section of the manuscript and on this form below.

**Advisory/Management and Consulting Positions**

We ask that authors disclose any position, be it a member of a Board or Advisory Committee or a paid consultant, that they have been involved with that is related to this study. **Please select one of the following:**

- The authors have no positions to declare.
- I or other authors have management/advisory or consulting relationships noted in the “Declaration of Interests” section of the manuscript and on this form below.

**Patents**

We ask that you disclose any patents related to this work by any of the authors or their institutions. **Please select one of the following:**

- The authors have no related patents to declare.
- I or one of my authors have a patent related to this work, which is noted in the “Declaration of Interests” section of the manuscript and on this form below.

**Please insert any “Declaration of Interests” statement in this space.** This exact text should also be included in the “Declaration of Interests” section of the manuscript. If no authors have a competing interest, please insert the text, “The authors declare no competing interests.”

D Mook-Kanamori is a part-time clinical research consultant for Metabolon, Inc. MA Nalls’ participation is supported by a consulting contract between Data Tecnica International and the National Institute on Aging, National Institutes of Health. V Salomaa has participated in a conference trip and received an honorarium sponsored by Novo Nordisk. This work was conducted prior to ME Garcia’s current affiliation with the National Heart, Lung, and Blood Institute, and, as such, the views expressed in this article do not represent the views of the NHLBI, NIH, or other government entity.

**On behalf of all authors, I declare that I have disclosed all competing interests related to this work. If any exist, they have been included in the “Declaration of Interests” section of the manuscript.**

Name:

Karen Mohlke

Manuscript  
Number (if  
available):

AJHG-D-19-00145R2