



UWA Centre for  
Public Value



THE UNIVERSITY OF  
**WESTERN**  
**AUSTRALIA**

## Calculating the Discrepancy Between Funding and the Real Cost of Delivering Social Services

### Project Overview



Professor David Gilchrist  
Director, UWA Centre for Public Value

29<sup>th</sup> May 2024

# The Problem...



- **Historical Underfunding – the starvation cycle**
- **Historical Inappropriate Indexation Calculations**
- **No Policy Maker Knowledge of Comprehensive Cost**
- **Massive Cost of Living Increase + Workforce Competition**

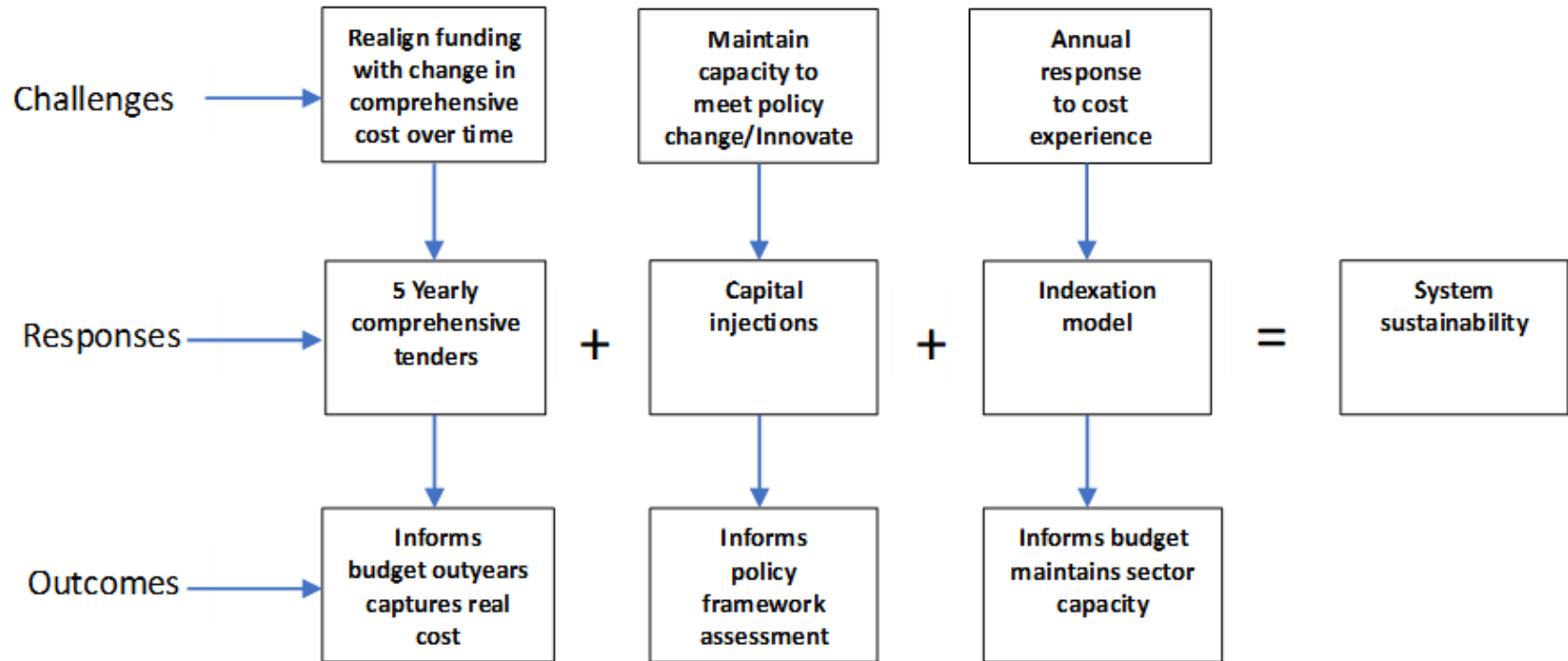
# The Problem...



- **Sustainability Pressure...**
  - **Quality**
  - **Quantity**
  - **Timing**

**Systemic View – Service Mix**

# The Problem...



# Objective and Method



Research objective is to demonstrate the reality of poor funding:

- 6 discrete case studies
- Chosen for attributes (e.g. service type, location, size)
- Collect three years' data and analyse
- Produce case for each and a project report
- Aim to support advocacy and demonstrate funding challenge

# Research Support



- VERY difficult to get data
- Building a panel to ensure extrapolation possible across whole sector
- Panel members: Preparers, members, funders and auditors
- We would love you to join the panel for a maximum of 10 surveys per annum (only one per month)



# Contacts

Professor David Gilchrist



david.gilchrist@uwa.edu.au

Centre for Public Value:

<https://www.uwa.edu.au/schools/Research/Centre-for-Public-Value>